



All Products for Commercial & Industrial Applications



ACME ENGINEERING & MANUFACTURING CORP.

P.O. Box 978 • Muskogee, OK 74402 • 918/682-7791
Fax 918/682-0134 • www.acmefan.com



acmefan.com



ACME warrants its equipment to be free from defects in materials and workmanship for a period of **two years** from the date of shipment on all equipment*. Refer to form MS149 for complete limited warranty terms and conditions. This form is available to anyone at www.acmefan.com.

*The comprehensive warranty applies to all equipment except for belts which are warranted up to 1 year from the ship date and Polyethylene tubing which is warranted up to 90 days from the ship date.



ACME offers a 5 year warranty on the **ACME Duplex Split Pillow Block** shaft and bearing assembly. These exceptional bearings are resiliently mounted in neoprene rings and permanently lubricated in a duplex split pillow block housing. Acme D. S. Pillow Block Bearings require no periodic servicing resulting in reduced down time and more savings.



U.L. 705 Listed

U.L. 705 requirements cover roof and wall-mounted power ventilators as well as straight-through duct fans as intended for commercial or industrial use and for connection to permanently installed wiring systems in accordance with the National Electrical Code, NFPA 70, for the United States.



U.L. 705 Listed

C.U.L./U.S. 705 requirements cover roof and wall-mounted power ventilators as well as straight-through duct fans as intended for commercial or industrial use and for connection to permanently installed wiring systems in accordance with the National Electrical Code, NFPA 70, for the United States and Canada.



U.L. 762 Listed

U.L. 762 requirements cover products listed to operate continuously at elevated temperatures and continue operation during grease flare-up. These units are intended for installation in accordance with the National Fire Protection Association (NFPA) Standard 96: Standard for Ventilation Control and Fire Protection of Commercial Cooking Operations, for the United States.

Power Ventilators for Smoke Control Systems

Power Ventilators for Smoke Control Systems covers products intended for installation in buildings in accordance with ANSI/NFPA 92A, "Smoke-Control Systems Utilizing Barriers and Pressure Differences," and ANSI/NFPA 92B, "Smoke Management Systems in Malls, Atria, and Large Spaces" for the United States. These ventilators have been investigated with respect to their operation during exposure to elevated temperatures and have been marked on the product and indicated in the individual certifications.

MIAMI-DADE COUNTY
APPROVED

Miami-Dade certified products are tested for static and cyclic wind loading as well as missile impact and constructed to withstand wind loads specified by the 2010 Florida Building Code. Products certified by Miami-Dade do not require tie-downs but must be installed in accordance with the provided mounting instructions.

Meets 2009 IBC: Seismic

The 2009 International Building Code (2009 IBC) includes HVAC and fan standards for the design of non-structural components subject to seismic events, and they incorporate certification of the mechanical equipment itself. The Office of Statewide Health Planning and Development (OSHPD) enforces building standards per the California Building Code and reflects the standards of the 2009 IBC. THE OSHPD Special Seismic Certification Preapproval (OSP) accepts certification by way of shake table testing or through experience data.

AMCA International Licensed

This is a reference to the **AMCA licensed products** whose performance may be viewed with our website or full catalog.



Meet your energy savings requirements on direct driven products with the **ACME EC (electronically commutated)** Motors that maintain 85% efficiency even as the motor is slowed down. The brush-free, DC electronically commutated motors can be dialed down by 80%. An EC Motor converts AC power to DC for increased efficiencies and cooler temperatures at lower speeds.



This certification is recognized in both the United States and Canada and signifies that a product bearing the **ETL Listed** mark is determined to have met the minimum requirements of prescribed product safety standards.

Index

Roof Ventilation: Exhaust

	Page No.
General Ventilation.....	4-8
Lab Exhaust Fans.....	9
Restaurant Fans.....	10
Smoke Exhaust Fans.....	11
Hurricane Rated Fans.....	12-13
Hurricane and Restaurant Grease Rated Fans.....	14-15
Hurricane and Smoke Exhaust Rated Fans.....	16
Seismic Rated Fans.....	17

Roof Ventilation: Supply

General Ventilation.....	18-20
Restaurant Fans.....	21-22
Hurricane Rated Fans.....	23

Roof Vents (Hoods)

General Ventilation.....	24-25
Hurricane Rated.....	26

Wall Fans

General Ventilation: Exhaust.....	27-29
General Ventilation: Supply.....	30-31
Restaurant Fans.....	32
Smoke Exhaust Fans.....	33
Hurricane Rated Fans.....	34
Hurricane and Restaurant Grease Rated Fans.....	35

Ceiling & Cabinet Fans

General Ventilation.....	36-37
--------------------------	-------

In-Line & Mixed Flow Fans

General Ventilation.....	38-40
Restaurant Fans.....	41
Smoke Exhaust Fans.....	42-43

Blowers & Plenum Fans

General Ventilation.....	44-46
Restaurant Fans.....	47
Smoke Exhaust Fans.....	48
Hurricane Rated Fans.....	49
Hurricane and Restaurant Grease Rated Fans.....	50
Hurricane and Smoke Exhaust Rated Fans.....	51

Circulators

General Ventilation.....	52
--------------------------	----

De-Stratification Fans

General Ventilation.....	53
--------------------------	----

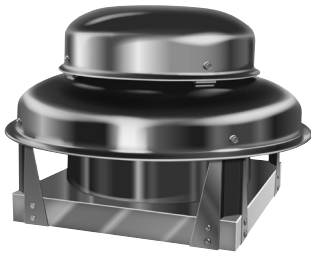
Roof Ventilation: Exhaust

General Ventilation

Downblast Centrifugal



PV & PVD



PRN

PV belt drive fans, PRN and PVD direct drive fans are downblast, centrifugal power roof ventilators designed for exhausting clean air.

Drive	Model	Max CFM	Max Static Pressure	Model Sizes Available
Belt	PV	40,608	2"	75-543
Direct	PRN	2,770	1"	60-171
Direct	PVD	4,622	2.625"	120-165

PV, PRN, & PVD:



U.L. 705 Listed

AMCA International
Licensed

PRN & PVD:



Upblast Centrifugal



PNURF & PDURF

PNURF belt drive fans and PDURF direct drive fans are upblast, centrifugal power roof ventilators designed for exhausting clean air.

Drive	Model	Max CFM	Max Static Pressure	Model Sizes Available
Belt	PNURF	33,374	5"	80-490
Direct	PDURF	5,317	1.50"	80-200

PNURF & PDURF:



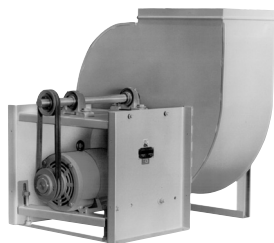
U.L. 705 Listed

AMCA International
Licensed

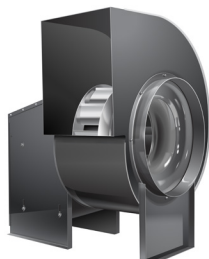
PDURF:



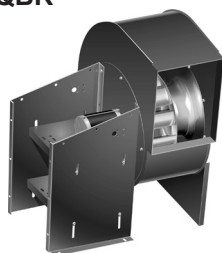
Centrifugal Utility Blower



3000 & 8100



QBR



QBRD

Belt drive 3000, 8100, and QBR and direct drive QBRD are utility sets designed for high efficiency and low sound output. 3000 and 8100 available in:

- Class 1 or Class 2
- Clockwise or Counterclockwise Rotation
- 7 discharge positions

QBR and QBRD available in:

- Clockwise or Counterclockwise Rotation
- 7 discharge positions

Drive	Model	Max CFM	Max Static Pressure	Model Sizes Available
Belt	3000C1	61,128	5.5"	3012-3054
Belt	3000C2	81,504	11"	3012-3054
Belt	8100C1	78,977	6.5"	8115-8154
Belt	8100C2	80,015	11"	8115-8154
Belt	QBR	23,230	3.5"	100-365
Direct	QBRD	3,065	3.25"	50-161

QBR & 8100:



3000, 8100, & QBR:

**AMCA International
Licensed**

QBRD



Roof Ventilation: Exhaust

Upblast High-Pressure Centrifugal



2100RU

2100RU is an inline centrifugal, upblast fan designed for maximum efficiency and low sound output.

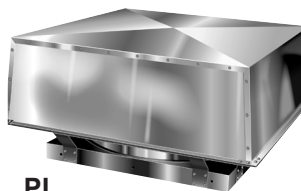
2100RU:



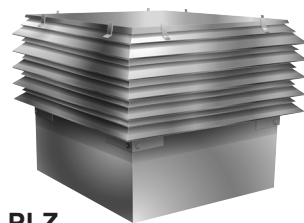
**AMCA International
Licensed**

Drive	Model	Max CFM	Max Static Pressure	Model Sizes Available
Belt	2100RU	45,182	6"	2115-2149

Downblast Square Hood and Downblast Louvered Hood



PL



PLZ

Square hood PL and louvered hood PLZ are belt drive, downblast centrifugal fans, designed for exhausting clean air.

Drive	Model	Max CFM	Max Static Pressure	Model Sizes Available
Belt	PL	31,810	1"	135-543
Belt	PLZ	31,810	1"	135-543

PL & PLZ:



U.L. 705 Listed

AMCA International
Licensed

Downblast Propeller Low Pressure



LQ

LQ ventilators are direct drive, low profile propeller roof fans designed to deliver large volumes of air and operate more quietly than conventional propeller roof ventilators.

Drive	Model	Max CFM	Max Static Pressure	Model Sizes Available
Direct	LQ	14,100	2"	10-36

LQ:



U.L. 705 Listed

AMCA International
Licensed

Downblast Hooded Propeller Low and Medium to High Pressure



EC & ECH

EC and ECH are low silhouette belt drive propeller fans designed for high capacity exhaust ventilation.

Drive	Model	Max CFM	Max Static Pressure	Model Sizes Available
Belt	EC	18,990	0.5"	30-48
Belt	ECH	74,200	0.875"	24-72

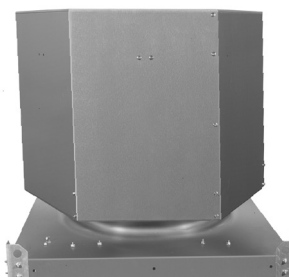
EC & ECH:



U.L. 705 Listed

AMCA International
Licensed

Upblast Low Silhouette Propeller - Motor/Drives in Air Stream



UBG & UD

Belt drive UBG and direct drive UD are low silhouette exhausters that are ideally suited for moving large volumes of air at low static pressures.

Drive	Model	Max CFM	Max Static Pressure	Model Sizes Available
Belt	UBG	83,373	0.75"	24-72
Direct	UD	32,000	0.5"	18-48

UBG:



U.L. 705 Listed

UD:

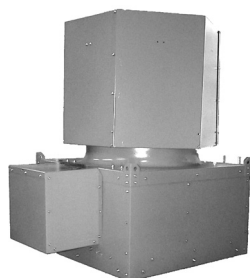


U.L. 705 Listed

UD & UBG:

AMCA International
Licensed

Upblast Propeller - Motor/Drives Out of Air Stream



UBGMX

Belt drive UBGMX is a high velocity exhauster designed to discharge air up and away from the building and features the motor/drives out of the airstream for ease of servicing and inspection.

Drive	Model	Max CFM	Max Static Pressure	Model Sizes Available
Belt	UBGMX	78,842	0.75"	24-72

UBGMX:



U.L. 705 Listed

AMCA International
Licensed

Upblast Tubeaxial: Steel or Alum - Motor/Drives Out of Air Stream



UBH & UBHA

Heavy duty steel construction UBH and heavy gauge aluminum construction UBHA are high velocity upblast discharge fans ideally suited for applications that require the motor, drives and bearings out of the airstream.

Drive	Model	Max CFM	Max Static Pressure	Model Sizes Available
Belt	UBH	61,236	1.25"	16-60
Belt	UBHA	41,580	1.00"	16-48

UBH & UBHA:

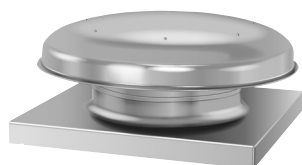


U.L. 705 Listed

AMCA International
Licensed

Gravity Intake/Relief Vent

LQV is a low silhouette, gravity intake/relief vent.



LQV

Model	Max CFM	Max Static Pressure	Model Sizes Available
LQV	17,300	0.25"	10-48

Gravity Relief Vent

EV is a low silhouette exhaust hood.

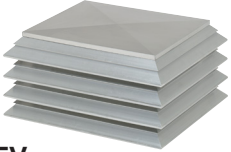


EV

Model	Max CFM	Max Static Pressure	Max Throat Size
EV	63,000	0.25"	144" x 188"

Gravity Louvered Relief Vent

LEV is a multi-tiered louvered exhaust hood.

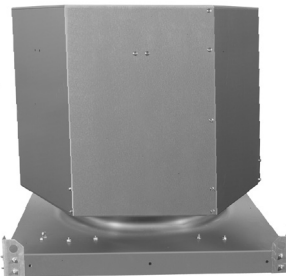


LEV

Model	Max CFM	Max Static Pressure	Max Throat Size	Max Tiers
LEV	85,765	0.3"	88" x 144"	20

Upblast Relief Vent Butterfly Dampers

UBGEC is a heavy duty, curb-mounted, gravity relief or exhaust unit that utilizes butterfly dampers.



UBGEC

Model	Max CFM	Max Static Pressure	Model Sizes Available
UBGEC	56,548	0.25"	24-72

Roof Ventilation: Exhaust

Lab Exhaust Fans

Upblast Centrifugal Laboratory Exhaust



TIBLE

TIBLE is a belt drive, centrifugal laboratory exhauster constructed to operate in a roof mounted vertical position with optional bypass air dampers and plenum intended to dilute noxious fumes. Maximum inlet temperature: 200°F.

Drive	Model	Max CFM	Max Static Pressure	Model Sizes Available
Belt	TIBLE	17,500	5"	80-365

TIBLE:

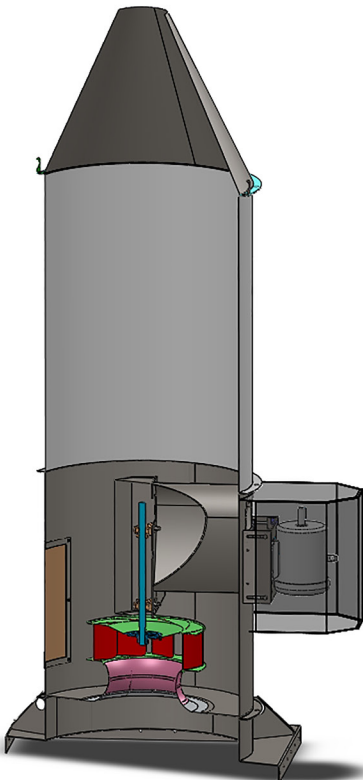


AMCA International
Licensed

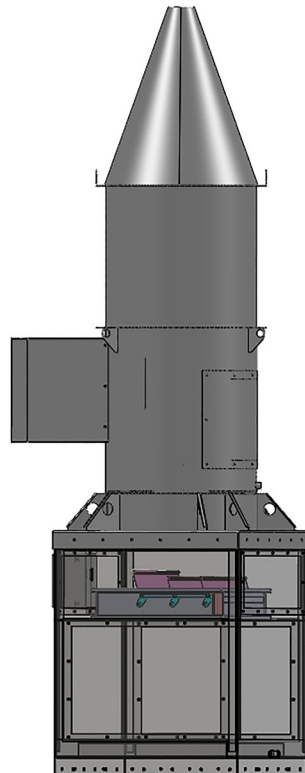
Designed to meet:

- ANSI 29.5:
Laboratory
Ventilation
- NFPA 45:
Standard on fire
protection for
laboratories
using chemicals
- ASHRAE
Laboratory
Guidelines

Laboratory Exhaust Fan Without an Inlet Plenum Box and Dampers

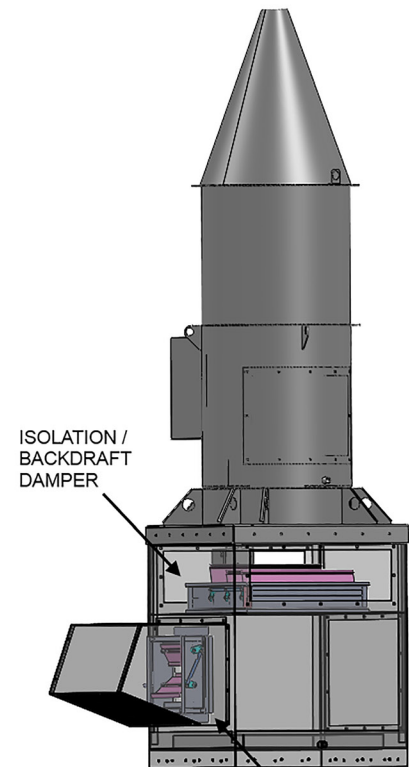


Laboratory Exhaust Fan With Inlet Plenum Box and Isolation Damper



TIBLE FAN WITH ISOLATION DAMPER ONLY

Laboratory Exhaust Fan With an Inlet Plenum Box, a Bypass Control Damper and an Isolation Damper



BYPASS / CONTROL DAMPER

Roof Ventilation: Exhaust

Restaurant Fans

Upblast Centrifugal: Grease Rated UL 762



PNURG & PDURG

PNURG belt drive and PDURG direct drive fans are upblast, centrifugal power roof ventilators designed for exhausting grease laden air.

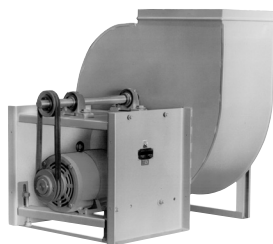
Drive	Model	Max CFM	Max Static Pressure	Model Sizes Available
Belt	PNURG	33,374	5"	80-490
Direct	PDURG	5,317	1.50"	80-200

PNURG & PDURG:



AMCA International
Licensed

Centrifugal Utility Blower: Grease Rated UL 762



8100 & QBR

Belt drive 8100 and QBR are utility sets designed for high efficiency and low sound output in applications with grease laden air.

8100 available in:

- Class 1 or Class 2
- Clockwise or Counterclockwise Rotation
- 7 discharge positions

QBR available in:

- Clockwise or Counterclockwise Rotation
- 7 discharge positions

8100 & QBR:



AMCA International
Licensed

Drive	Model	Max CFM	Max Static Pressure	Model Sizes Available
Belt	8100C1	78,977	6.5"	8115-8154
Belt	8100C2	80,015	11"	8115-8154
Belt	QBR	23,230	3.5"	100-365

Roof Ventilation: Exhaust

Smoke Exhaust Fans

Upblast Centrifugal: UL Smoke Exhaust Rated



PNUSE

PNUSE belt drive fans are upblast, centrifugal power roof ventilators designed for emergency smoke exhaust applications.

UL smoke exhaust rated at 500°F for 4 & 8 hours, 630°F for 4 hours, and 1000°F for 15 & 25 minutes.

Drive	Model	Max CFM	Max Static Pressure	Model Sizes Available
Belt	PNUSE	33,374	5"	80-490

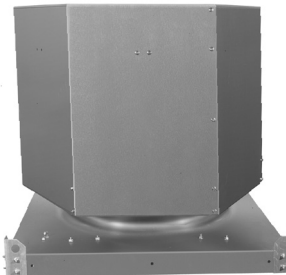
PNUSE:



**Power Ventilators
Smoke Control
Systems**

**AMCA International
Licensed**

Upblast Propeller: UL Smoke Exhaust Rated



UBGMXSE

UBGMXSE is a high velocity exhaust fan designed for emergency smoke exhaust applications and features the motor out of the airstream for ease of servicing and inspection.

UL smoke exhaust rated at 500°F for 4 hours and 1000°F for 15 minutes.

Drive	Model	Max CFM	Max Static Pressure	Model Sizes Available
Belt	UBGMXSE	78,842	0.75"	24-72

UBGMXSE:



**Power Ventilators for
Smoke Control
Systems**

**AMCA International
Licensed**

Upblast Tubeaxial: UL Smoke Exhaust Rated



UBHSE

Heavy duty steel construction UBHSE fans are high velocity upblast discharge fans with motors and drives located outside of the airstream and designed for emergency smoke exhaust applications.

UL smoke exhaust rated at 500°F for 4 hours, 630°F for 4 hours, 800°F for 4 hours and 1000°F for 15 minutes and 20 minutes.

Drive	Model	Max CFM	Max Static Pressure	Model Sizes Available
Belt	UBHSE	61,236	1.25"	16-60

UBHSE:



**Power Ventilators for
Smoke Control
Systems**

**AMCA International
Licensed**

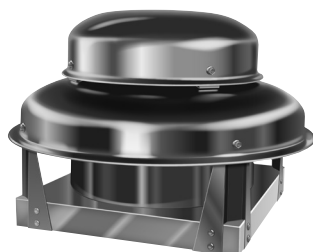
Roof Ventilation: Exhaust

Hurricane Rated Fans

Downblast Centrifugal: Hurricane Rated



PVH & PVDH



PRNH

Belt drive PVH and direct drive PRNH and PVDH are downblast, centrifugal power roof ventilators designed for exhausting clean air in high wind and hurricane resistance applications.

Drive	Model	Max CFM	Max Static Pressure	Model Sizes Available
Belt	PVH	19,043	2"	75-365
Direct	PRNH	2,770	1"	60-171
Direct	PVDH	4,622	2.625"	120-165

PVH & PRNH:



AMCA International
Licensed

PRNH & PVDH



Upblast Centrifugal: Hurricane Rated



PNURFH & PDURFH

PNURFH belt drive and PDURFH direct drive fans are upblast, centrifugal power roof ventilators designed for exhausting clean air in high wind and hurricane resistance applications.

Drive	Model	Max CFM	Max Static Pressure	Model Sizes Available
Belt	PNURFH	14,622	5"	80-300
Direct	PDURFH	5,317	1.50"	80-200

PNURFH & PDURFH:



AMCA International
Licensed

PDURFH



Wall Mount Centrifugal: Hurricane Rated

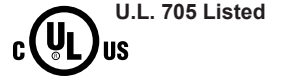


PNURFHW & PDURFHW

PNURFHW belt drive and PDURFHW direct drive fans are wall mounted, centrifugal power ventilators designed for exhausting clean air in high wind and hurricane resistance applications.

Drive	Model	Max CFM	Max Static Pressure	Model Sizes Available
Belt	PNURFHW	14,622	5"	80-300
Direct	PDURFHW	5,317	1.5"	80-200

PNURFHW & PDURFHW:

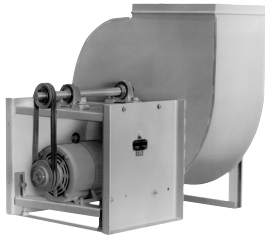


AMCA International
Licensed

PDURFHW:



Centrifugal Utility Blower: Hurricane Rated



3000H & 8100H

Belt drive 3000H, 8100H, and QBRH and direct drive QBRDH are utility sets designed for high efficiency and low sound output in high wind and hurricane resistance applications.

3000H and 8100H available in:

- Class 1 or Class 2
- Clockwise or Counterclockwise Rotation
- 7 discharge positions

QBRH and QBRDH available in:

- Clockwise or Counterclockwise Rotation
- 7 discharge positions

QBRH & 8100H:



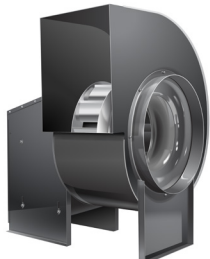
3000H, 8100H, QBRH, & QBRDH



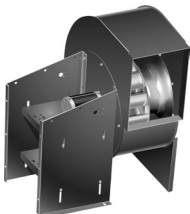
3000H, 8100H, & QBRH:

AMCA International
Licensed

QBRDH:



QBRH



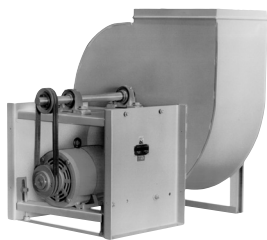
QBRDH

Drive	Model	Max CFM	Max Static Pressure	Model Sizes Available
Belt	3000C1H	27,468	5.5"	3012-3037
Belt	3000C2H	36,624	11"	3012-3037
Belt	8100C1H	27,468	6.5"	8115-8137
Belt	8100C2H	35,098	11"	8115-8137
Belt	QBRH	23,230	3.5"	100-365
Direct	QBRDH	3,065	3.25"	50-161

Roof Ventilation: Exhaust

Hurricane and Restaurant Grease Rated Fans

Centrifugal Utility Blower: Grease Rated UL 762, Hurricane Rated Restaurant Fans



8100H

Models 8100H and QBRH are belt drive, utility sets designed for high efficiency and low sound output in restaurant grease and high wind and hurricane resistance applications.

8100H available in:

- Class 1 or Class 2
- Clockwise or Counterclockwise Rotation
- 7 discharge positions

QBRH available in:

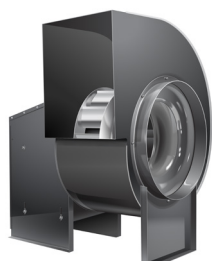
- Clockwise or Counterclockwise Rotation
- 7 discharge positions

8100H & QBRH:



AMCA International
Licensed

Drive	Model	Max CFM	Max Static Pressure	Model Sizes Available
Belt	8100C1H	27,468	6.5"	8115-8137
Belt	8100C2H	35,098	11"	8115-8137
Belt	QBRH	23,230	3.5"	100-365



QBRH

Upblast Centrifugal: Grease Rated UL 762, Hurricane Rated



PNURGH & PDURGH

PNURGH belt drive and PDURGH direct drive fans are upblast, centrifugal power roof ventilators designed for exhausting grease laden air in high wind and hurricane resistance restaurant applications.

Drive	Model	Max CFM	Max Static Pressure	Model Sizes Available
Belt	PNURGH	14,622	5"	80-300
Direct	PDURGH	5,317	1.50"	80-200

PNURGH & PDURGH:



AMCA International
Licensed

Wall Mount Centrifugal: Grease Rated UL 762, Hurricane Rated Restaurant Fans



**PNURGHW &
PDURGHW**

Belt drive PNURGHW and direct drive PDURGHW are wall mounted, power roof ventilators designed for exhausting grease laden air in high wind and hurricane resistance applications.

Drive	Model	Max CFM	Max Static Pressure	Model Sizes Available
Belt	PNURGHW	14,622	5"	80-300
Direct	PDURGHW	5,317	1.5"	80-200

PNURGHW & PDURGHW:



**AMCA International
Licensed**

Roof Ventilation: Exhaust

Hurricane and Smoke Exhaust Rated Fans

Upblast Centrifugal: UL Smoke Exhaust Rated, Hurricane Rated



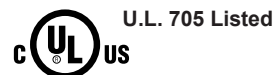
PNUSEH

PNUSEH belt drive fans are upblast, centrifugal power roof ventilators designed for both emergency smoke exhaust as well as exhausting clean air in high wind and hurricane resistance applications.

UL smoke exhaust rated at 500°F for 4 & 8 hours, 630°F for 4 hours, and 1000°F for 15 & 25 minutes.

Drive	Model	Max CFM	Max Static Pressure	Model Sizes Available
Belt	PNUSEH	14,622	5"	80-300

PNUSEH:

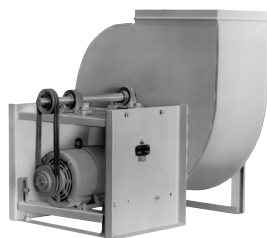


**Power Ventilators
for Smoke Control
Systems**



**AMCA International
Licensed**

Centrifugal Utility Blowers: UL Smoke Exhaust Rated, Hurricane Rated



8100SH

8100C1SH, 8100C2SH, and QBRSEH are belt drive, utility sets designed for high efficiency and low sound output in both emergency smoke exhaust and high wind and hurricane resistance applications.

UL smoke exhaust rated at 500°F for 4 hours and 1000°F for 15 minutes.

8100C1SH and 8100C2SH available in:

- Class 1 or Class 2
- Clockwise or Counterclockwise Rotation
- 7 discharge positions

QBRSEH available in:

- Clockwise or Counterclockwise Rotation
- 7 discharge positions

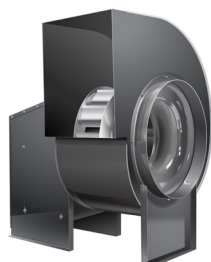
**8100SH &
QBRSEH:**



**Power Ventilators
for Smoke Control
Systems**



**AMCA International
Licensed**



QBRSEH

Drive	Model	Max CFM	Max Static Pressure	Model Sizes Available
Belt	8100C1SH	27,468	6.5"	8115-8137
Belt	8100C2SH	35,098	11"	8115-8137
Belt	QBRSEH	23,230	3.5"	137-365

Roof Ventilation: Exhaust

Seismic Rated Fans

Upblast Centrifugal: Seismic Rated



**PNURFSC &
PDURFSC**

PNURFSC belt drive and PDURGSC direct drive fans are upblast, centrifugal power roof ventilators designed for exhausting clean air and rated for seismic applications.

Drive	Model	Max CFM	Max Static Pressure	Model Sizes Available
Belt	PNURFSC	14,622	5"	80-300
Direct	PDURFSC	5,317	1.50"	80-200

**PNURFSC &
PDURFSC:**



**Meets 2009 IBC:
Seismic**

**AMCA International
Licensed**

PDURFSC:



Upblast Centrifugal: Grease Rated UL 762, Seismic Rated



**PNURGSC &
PDURGSC**

PNURGSC belt drive and PDURGSC direct drive fans are upblast, centrifugal power roof ventilators designed for exhausting grease laden air and rated for seismic applications.

Drive	Model	Max CFM	Max Static Pressure	Model Sizes Available
Belt	PNURGSC	14,622	5"	80-300
Direct	PDURGSC	5317	1.50"	80-200

**PNURGSC &
PDURGSC :**



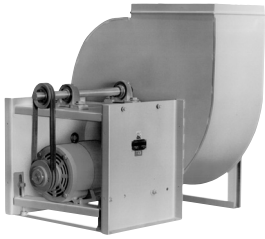
**Meets 2009 IBC:
Seismic**

**AMCA International
Licensed**

Roof Ventilation: Supply

General Ventilation

Centrifugal Utility Blowers



3000 & 8100

Belt drive 3000, 8100, and QBR and direct drive QBRD are utility sets designed for high efficiency and low sound output.

3000 and 8100 available in:

- Class 1 or Class 2
- Clockwise or Counterclockwise Rotation
- 7 discharge positions

QBR and QBRD available in:

- Clockwise or Counterclockwise Rotation
- 7 discharge positions

8100 & QBR:



U.L. 705 Listed

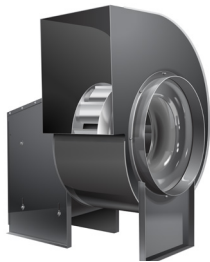
3000, 8100, & QBR:

AMCA International
Licensed

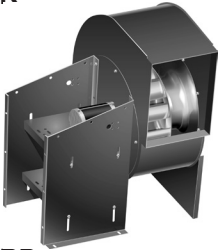
QBRD:



Drive	Model	Max CFM	Max Static Pressure	Model Sizes Available
Belt	3000C1	61,128	5.5"	3012-3054
Belt	3000C2	81,504	11"	3012-3054
Belt	8100C1	78,977	6.5"	8115-8154
Belt	8100C2	80,015	11"	8115-8154
Belt	QBR	23,230	3.5"	100-365
Direct	QBRD	3,065	3.25"	50-161



QBR



QBRD

Side Intake General Ventilation



AFSI

AFSI filtered side-supply air unit is designed to operate with washable aluminum filters to provide make-up air to the building.

AFSI:



U.L. 705 Listed

Drive	Model	Max CFM	Max Static Pressure	Model Sizes Available
Belt	AFSI	14,000	2.75"	106-200

4-Side Intake General Ventilation

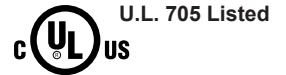


AFSN

AFSN filtered supply air unit is designed to operate with washable aluminum filters to provide make-up air to the building.

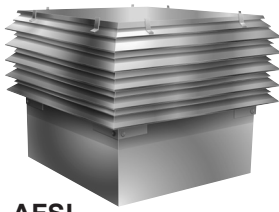
Drive	Model	Max CFM	Max Static Pressure	Model Sizes Available
Belt	AFSN	14,000	3"	106-200

AFSN:



AMCA International
Licensed

Louvered/4-Side Intake General Ventilation



AFSL

Louvered AFSL filtered, supply air unit is designed to operate with washable aluminum filters to provide make-up air to the building.

Drive	Model	Max CFM	Max Static Pressure	Model Sizes Available
Belt	AFSL	14,000	3"	106-200

AFSL:



AMCA International
Licensed

Downblast Propeller Low Pressure



LQ-S

LQ-S ventilators are direct drive, low profile propeller roof fans designed to deliver large volumes of air at high static pressure and operate more quietly than conventional propeller roof supply ventilators.

Drive	Model	Max CFM	Max Static Pressure	Model Sizes Available
Direct	LQ-S	13,500	1.25"	12-36

LQ-S:



AMCA International
Licensed

Downblast Hooded Propeller Low and Medium to High Pressure



EC-S & ECH-S

Low pressure EC-S and medium to high pressure ECH-S are low silhouette belt drive propeller fans designed for high capacity supply ventilation.

Drive	Model	Max CFM	Max Static Pressure	Model Sizes Available
Belt	EC-S	18,950	0.5"	30-48
Belt	ECH-S	73,700	0.875	24-72

EC-S & ECH-S:



AMCA International
Licensed

Gravity Intake Vent

IV is a low silhouette gravity intake ventilator.



IV

Model	Max CFM	Max Static Pressure	Max Throat Size
IV	67,358	0.3"	144" x 188"

Gravity Intake Vent

LIV is a multi-tiered, louvered gravity intake ventilator.

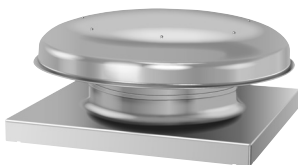


LIV

Model	Max CFM	Max Static Pressure	Max Throat Size	Max Tiers
LIV	85,765	0.3"	88" x 144"	20

Gravity Intake/Relief Vent

LQV is a low silhouette, gravity relief/supply vent.



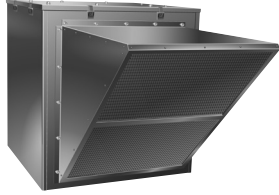
LQV

Model	Max CFM	Max Static Pressure	Model Sizes Available
LQV	17,300	0.3"	10-48

Roof Ventilation: Supply

Restaurant Fans

Side Intake General Ventilation



AFSI

AFSI filtered side-supply air unit is designed to operate with washable aluminum filters to provide make-up air to the building.

Drive	Model	Max CFM	Max Static Pressure	Model Sizes Available
Belt	AFSI	14,000	2.75"	106-200

AFSI:



U.L. 705 Listed

4-Side Intake General Ventilation



AFSN

AFSN filtered supply air unit is designed to operate with washable aluminum filters to provide make-up air to the building.

Drive	Model	Max CFM	Max Static Pressure	Model Sizes Available
Belt	AFSN	14,000	3"	106-200

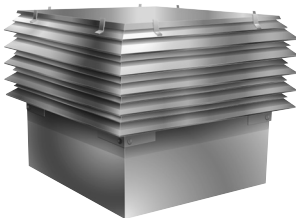
AFSN:



U.L. 705 Listed

AMCA International
Licensed

Louvered / 4-Side Intake General Ventilation



AFSL

Louvered AFSL filtered, supply air unit is designed to operate with washable aluminum filters to provide make-up air to the building.

Drive	Model	Max CFM	Max Static Pressure	Model Sizes Available
Belt	AFSL	14,000	3"	106-200

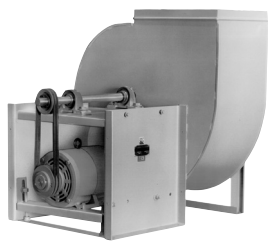
AFSL:



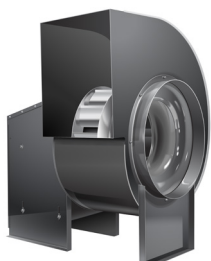
U.L. 705 Listed

AMCA International
Licensed

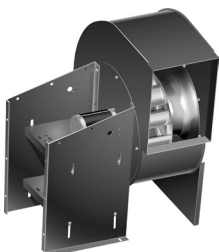
Centrifugal Utility Blowers



3000 & 8100



QBR



QBRD

Belt drive 3000, 8100, and QBR and direct drive QBRD are utility sets designed for high efficiency and low sound output.

3000 and 8100 available in:

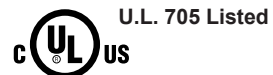
- Class 1 or Class 2
- Clockwise or Counterclockwise Rotation
- 7 discharge positions

QBR and QBRD available in:

- Clockwise or Counterclockwise Rotation
- 7 discharge positions

Drive	Model	Max CFM	Max Static Pressure	Model Sizes Available
Belt	3000C1	61,128	5.5"	3012-3054
Belt	3000C2	81,504	11"	3012-3054
Belt	8100C1	78,977	6.5"	8115-8154
Belt	8100C2	80,015	11"	8115-8154
Belt	QBR	23,230	3.5"	100-365
Direct	QBRD	3,065	3.25"	50-161

8100 & QBR:



3000, 8100, & QBR:

AMCA International
Licensed

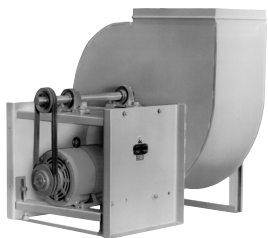
QBRD:



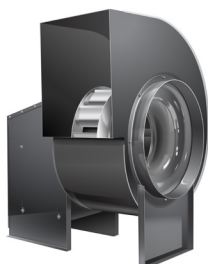
Roof Ventilation: Supply

Hurricane Rated Fans

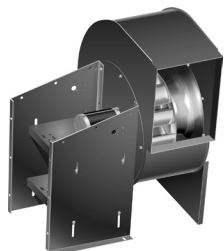
Centrifugal Utility Blowers: Hurricane Rated



3000H & 8100H



QBRH



QBRDH

Belt drive 3000H, 8100H, and QBRH and direct drive QBRDH are utility sets designed for high efficiency and low sound output in high wind and hurricane resistance applications.

3000H and 8100H available in:

- Class 1 or Class 2
- Clockwise or Counterclockwise Rotation
- 7 discharge positions

QBRH and QBRDH available in:

- Clockwise or Counterclockwise Rotation
- 7 discharge positions

Drive	Model	Max CFM	Max Static Pressure	Model Sizes Available
Belt	3000C1H	27,468	5.5"	3012-3037
Belt	3000C2H	36,624	11"	3012-3037
Belt	8100C1H	27,468	6.5"	8115-8137
Belt	8100C2H	35,098	11"	8115-8137
Belt	QBRH	23,230	3.5"	100-365
Direct	QBRDH	3,065	3.25"	50-161

QBRH & 8100H:



U.L. 705 Listed

3000H, 8100H, & QBRH:



AMCA International Licensed

QBRDH:



Roof Vents (Hoods)

General Ventilation

Gravity Intake Vent

IV is a low silhouette gravity intake ventilator.

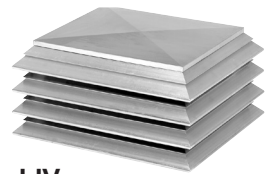


IV

Model	Max CFM	Max Static Pressure	Throat Size Up to
IV	67,358	0.3"	144" x 180"

Gravity Louvered Intake Vent

LIV is a multi-tiered, louvered gravity intake ventilator.



LIV

Model	Max CFM	Max Static Pressure	Max Throat Size	Max Tiers
LIV	85,765	0.3"	88" x 144"	20

Gravity Intake/Relief Vent

LQV is a low silhouette, gravity intake/relief vent.



LQV

Model	Max CFM	Max Static Pressure	Model Sizes Available
LQV	17,300	0.3"	10-48

Gravity Relief Vent

EV is a low silhouette exhaust hood.



EV

Model	Max CFM	Max Static Pressure	Max Throat Size
EV	63,000	0.3"	144" x 180"

Gravity Louvered Relief Vent

LEV is a multi-tiered louvered exhaust hood.

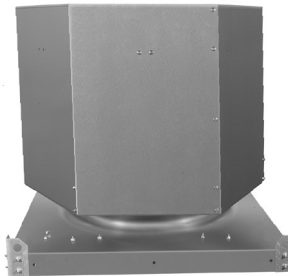


LEV

Model	Max CFM	Max Static Pressure	Throat Size Up to	Max Tiers
LEV	85,765	0.3"	88" x 144"	20

Upblast Relief Vent Butterfly Dampers

UBGEC is a heavy duty, curb-mounted, gravity relief or exhaust unit that utilizes butterfly dampers.



UBGEC

Model	Max CFM	Max Static Pressure	Model Sizes Available
UBGEC	56,548	0.25"	24-72

Roof Vents (Hoods)

Hurricane Rated

Gravity Intake Vent: Hurricane Rated



IVH

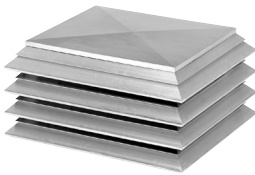
IVH is a low silhouette gravity intake ventilator designed to supply air in high wind and hurricane resistance applications.

Model	Max CFM	Max Static Pressure	Throat Size Up to
IVH	23,729	0.25"	54" x 54"

IVH:

MIAMI-DADE COUNTY
APPROVED

Gravity Louvered Intake Vent: Hurricane Rated



LIVH

LIVH is a multi-tiered, louvered gravity intake ventilator designed to supply air in high wind and hurricane resistance applications.

Model	Max CFM	Max Static Pressure	Max Throat Size	Tiers
LIVH	25,032	0.15"	60" x 60"	9

LIVH:

MIAMI-DADE COUNTY
APPROVED

Gravity Relief Vent: Hurricane Rated



EVH

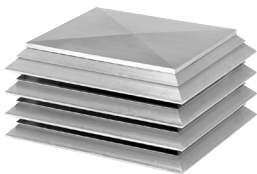
EVH is a low silhouette exhaust hood designed to exhaust clean air in high wind and hurricane resistance applications.

Model	Max CFM	Max Static Pressure	Throat Size Up to
EVH	25,310	0.25"	54" x 54"

EVH:

MIAMI-DADE COUNTY
APPROVED

Gravity Louvered Relief Vent: Hurricane Rated



LEVH

LEVH is a multi-tiered louvered exhaust hood designed to exhaust clean air in high wind and hurricane resistance applications.

Model	Max CFM	Max Static Pressure	Throat Size Up to	Tiers
LEVH	25,032	0.15"	60" x 60"	9

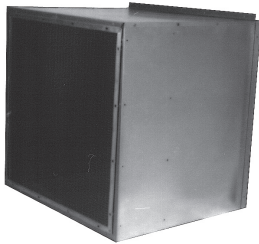
LEVH:

MIAMI-DADE COUNTY
APPROVED

Wall Fans

General Ventilation: Exhaust

Propeller Wall Housing Panel Fan



**DCWBP, DCKWBP,
DCHWBP, KWBP,
FNWBP, & FQWBP**

Belt drive DCWBP, DCKWBP, DCHWBP, KWBP and direct drive FNWBP and FQWBP are propeller exhaust fans designed with a wall box package.

Drive	Model	Max CFM	Max Static Pressure	Model Sizes Available
Belt	DCWBP	27,720	0.375"	20-54
Belt	DCKWBP	73,080	0.75"	24-72
Belt	DCHWBP	77,240	0.25"	42-72
Belt	KWBP	47,400	1.25"	24-54
Direct	FNWBP	22,400	1"	14-48
Direct	FQWBP	17,800	0.875"	9-36

**DCWBP, DCKWBP,
DCHWBP, KWBP,
FNWBP, & FQWBP:**



**AMCA International
Licensed**

FNWBP & FQWBP:



Propeller Wall Collar Panel Fan



FNWCP

Belt drive DCWCP, DCKWCP, DCWCP, KWCP and direct drive FNWCP and FQWCP are propeller exhaust fans designed with a wall collar package.

Drive	Model	Max CFM	Max Static Pressure	Model Sizes Available
Belt	DCWCP	27,720	0.375"	20-54
Belt	DCKWCP	73,080	0.75"	24-72
Belt	DCHWCP	77,240	0.25"	42-72
Belt	KWCP	47,400	1.25"	24-54
Direct	FNWCP	22,400	1"	14-48
Direct	FQWCP	17,800	0.875"	9-36

**DCWCP, DCKWCP,
DCHWCP, KWCP,
FNWCP, & FQWCP:**

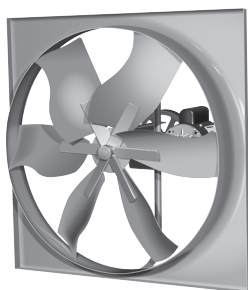


**AMCA International
Licensed**

FNWCP & FQWCP:



Propeller Panel Fan



DC, DCK, & DCH



FN & FQ

Belt drive DC, DCK, DC, K and direct drive FN and FQ are propeller exhaust fans.

Drive	Model	Max CFM	Max Static Pressure	Model Sizes Available
Belt	DC	27,720	0.375"	20-54
Belt	DCK	73,080	0.75"	24-72
Belt	DCH	77,240	0.25"	42-72
Belt	K	79,330	1.25"	24-72
Direct	FN	22,400	1"	14-48
Direct	FQ	17,800	0.875"	9-36

DC, DCK, DCH, K, FN, & FQ:



U.L. 705 Listed

AMCA International Licensed

FN & FQ:



Centrifugal Wall Mount



PNURFW & PDURFW

PNURFW belt drive and PDURFW direct drive fans are wall mounted, centrifugal ventilators designed for exhausting clean air away from the building.

Drive	Model	Max CFM	Max Static Pressure	Model Sizes Available
Belt	PNURFW	14,622	5"	80-300
Direct	PDURFW	5,317	1.5"	80-200

PNURFW & PDURFW:



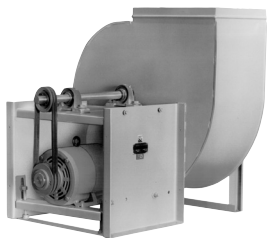
U.L. 705 Listed

AMCA International Licensed

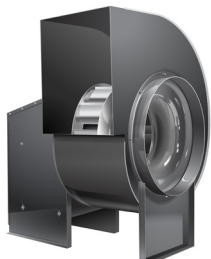
PDURFW:



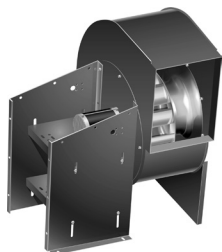
Centrifugal Utility Blower



3000 & 8100



QBR



QBRD

Belt drive 3000, 8100, and QBR and direct drive QBRD are utility sets designed for high efficiency and low sound output.

3000 and 8100 available in:

- Class 1 or Class 2
- Clockwise or Counterclockwise Rotation
- 7 discharge positions

QBR and QBRD available in:

- Clockwise or Counterclockwise Rotation
- 7 discharge positions

Drive	Model	Max CFM	Max Static Pressure	Model Sizes Available
Belt	3000C1	61,128	5.5"	3012-3054
Belt	3000C2	81,504	11"	3012-3054
Belt	8100C1	78,977	6.5"	8115-8154
Belt	8100C2	80,015	11"	8115-8154
Belt	QBR	23,230	3.5"	100-365
Direct	QBRD	3,065	3.25"	50-161

8100 & QBR:



U.L. 705 Listed

3000, 8100, & QBR:

AMCA International
Licensed

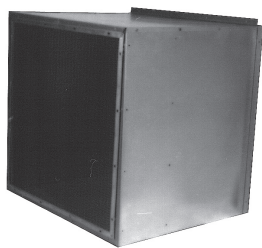
QBRD:



Wall Fans

General Ventilation: Supply

Propeller Wall Housing Panel Fan



**DC-RWBP, DCK-RWBP,
DCH-RWBP, K-RWBP,
FN-RWBP, & FQ-RWBP**

Belt drive DC-RWBP, DCK-RWBP, DCH-RWBP, K-RWBP and direct drive FN-RWBP and FQ-RWBP are propeller supply fans designed with a wall box package.

Drive	Model	Max CFM	Max Static Pressure	Model Sizes Available
Belt	DC-RWBP	27,720	0.375"	24-48
Belt	DCK-RWBP	73,080	0.75"	24-72
Belt	DCH-RWBP	77,240	0.25"	42-72
Belt	K-RWBP	36,870	1.25"	24-48
Direct	FN-RWBP	22,400	1"	14-48
Direct	FQ-RWBP	17,800	0.875"	12-36

**DC-RWBP,
DCK-RWBP,
DCH-RWBP,
K-RWBP, FN-
RWBP, & FQ-
RWBP:**



**AMCA International
Licensed**

**FN-RWBP &
FQ-RWBP:**



Propeller Wall Collar Panel Fan



FN-RWCP

Belt drive DC-RWCP, DCK-RWCP, DCH-RWCP, K-RWCP and direct drive FN-RWCP and FQ-RWCP are propeller supply fans designed with a wall collar package.

Drive	Model	Max CFM	Max Static Pressure	Model Sizes Available
Belt	DC-RWCP	27,720	0.375"	24-48
Belt	DCK-RWCP	73,080	0.75"	24-72
Belt	DCH-RWCP	77,240	0.25"	42-72
Belt	K-RWCP	36,870	1.25"	24-48
Direct	FN-RWCP	22,400	1"	14-48
Direct	FQ-RWCP	17,800	0.875"	12-36

**DC-RWCP, DCK-
RWCP, DCH-RWCP,
K-RWCP, FN-
RWCP,
& FQ-RWCP:**

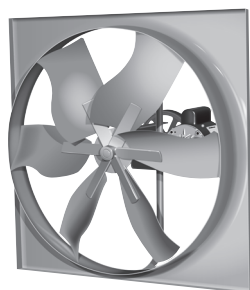


**AMCA International
Licensed**

**FN-RWCP &
FQ-RWCP:**



Propeller Panel Fan



DC-R, DCH-R, DCK-R,
& K-R



FN-R & FQ-R

Belt drive DC-R, DCK-R, DCH-R, K-R and direct drive FN-R and FQ-R are propeller supply fans.

Drive	Model	Max CFM	Max Static Pressure	Model Sizes Available
Belt	DC-R	27,720	0.375"	24-48
Belt	DCK-R	73,080	0.75"	24-72
Belt	DCH-R	77,240	0.25"	42-72
Belt	K-R	36,870	1.25"	24-48
Direct	FN-R	22,400	1"	14-48
Direct	FQ-R	17,800	0.875"	12-36

**DC-R, DCK-R,
DCH-R, K-R, FN-R,
& FQ-R:**

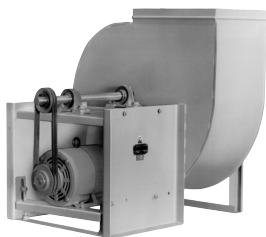


AMCA International
Licensed

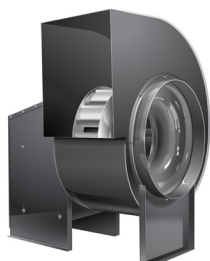
FN-R & FQ-R:



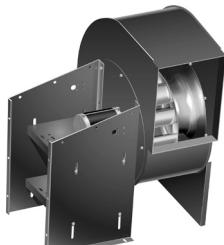
Centrifugal Utility Blower



3000 & 8100



QBR



QBRD

Belt drive 3000, 8100, and QBR and direct drive QBRD are utility sets designed for high efficiency and low sound output. 3000 and 8100 available in:

- Class 1 or Class 2
- Clockwise or Counterclockwise Rotation
- 7 discharge positions

QBR and QBRD available in:

- Clockwise or Counterclockwise Rotation
- 7 discharge positions

Drive	Model	Max CFM	Max Static Pressure	Model Sizes Available
Belt	3000C1	61,128	5.5"	3012-3054
Belt	3000C2	81,504	11"	3012-3054
Belt	8100C1	78,977	6.5"	8115-8154
Belt	8100C2	80,015	11"	8115-8154
Belt	QBR	23,230	3.5"	100-365
Direct	QBRD	3,065	3.25"	50-161

8100 & QBR:



3000, 8100, & QBR:

AMCA International
Licensed

QBRD:



Wall Fans

Restaurant Fans

Centrifugal Wall Mount: Grease Rated UL 762



PNURGW belt drive and PDURGW direct drive fans are wall mounted, centrifugal power ventilators designed for exhausting grease laden air.

Drive	Model	Max CFM	Max Static Pressure	Model Sizes Available
Belt	PNURGW	14,622	5"	80-300
Direct	PDURGW	5,317	1.50"	80-200

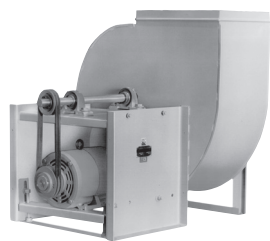
PNURGW & PDURGW

PNURGW & PDURGW:



AMCA International
Licensed

Centrifugal Utility Blower: Grease Rated UL 762



Belt drive 8100 and QBR are utility sets designed for high efficiency and low sound output in applications with grease laden air.

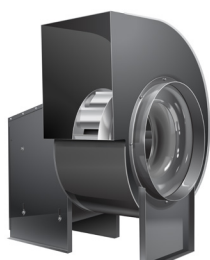
8100 available in:

- Class 1 or Class 2
- Clockwise or Counterclockwise Rotation
- 7 discharge positions

QBR available in:

- Clockwise or Counterclockwise Rotation
- 7 discharge positions

8100



QBR

Drive	Model	Max CFM	Max Static Pressure	Model Sizes Available
Belt	8100C1	78,977	6.5"	8115-8154
Belt	8100C2	80,015	11"	8115-8154
Belt	QBR	23,230	3.5"	100-365

8100, & QBR:



AMCA International
Licensed

Wall Fans

Smoke Exhaust Fans

Centrifugal: UL Smoke Exhaust Rated



PNUSEW

Belt drive PNUSEW is wall mounted, power ventilators designed for emergency smoke control.

Drive	Model	Max CFM	Max Static Pressure	Model Sizes Available
Belt	PNUSEW	14,622	5"	80-300

PNUSEW:



Power Ventilators for
Smoke Control
Systems



AMCA International
Licensed

Wall Fans

Hurricane Rated Fans

Wall Mount Centrifugal: Hurricane Rated



PNURFHW &
PDURFHW

PNURFHW belt drive and PDURFHW direct drive fans are wall mounted, centrifugal power ventilators designed for exhausting clean air in high wind and hurricane resistance applications.

Drive	Model	Max CFM	Max Static Pressure	Model Sizes Available
Belt	PNURFHW	14,622	5"	80-300
Direct	PDURFHW	5,317	1.5"	80-200

PNURFHW &
PDURFHW:



AMCA International
Licensed

PDURFHW:



Wall Fans

Hurricane and Restaurant Grease Rated Fans

Wall Mount Centrifugal: Grease Rated UL762, Hurricane Rated



PNURGHW &
PDURGHW

PNURGHW belt drive and PDURGHW direct drive fans are wall mounted, centrifugal power ventilators designed for exhausting grease laden air in high wind and hurricane resistance applications.

Drive	Model	Max CFM	Max Static Pressure	Model Sizes Available
Belt	PNURGHW	14,622	5"	80-300
Direct	PDURGHW	5,317	1.5"	80-200

PNURGHW &
PDURGHW:



AMCA International
Licensed

Ceiling & Cabinet Fans

General Ventilation

Centrifugal Ceiling Exhauster



L

L is ceiling mounted, direct drive centrifugal exhausters designed for ultra-quiet operation.

Drive	Model	Max CFM	Max Static Pressure	Model Sizes Available
Direct	L	1,590	1"	50-1500

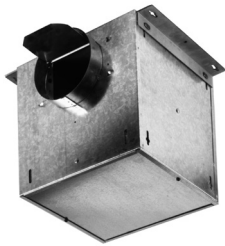
L:



U.L. 507 Listed

AMCA International
Licensed

Centrifugal In-Line Ceiling Exhauster Low Pressure - Economical



LL

LL is an in-line, direct drive centrifugal exhauster designed for ultra-quiet operation.

Drive	Model	Max CFM	Max Static Pressure	Model Sizes Available
Direct	LL	3,605	1"	100-3500

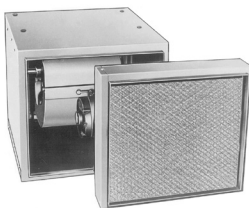
LL:



U.L. 507 Listed

AMCA International
Licensed

Centrifugal Ceiling Duct Blower Indoor Only



DM

DM and DMT are belt drive, forward curve inline duct blowers that are designed for indoor use.

Drive	Model	Max CFM	Max Static Pressure	Model Sizes Available
Belt	DM	7,600	2.5"	7-18
Belt	DMT	8,800	2.5"	7-15

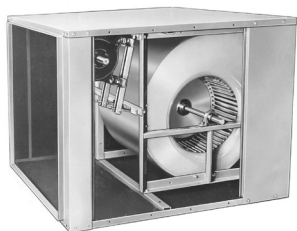
DM & DMT:



Intertek

AMCA International
Licensed

Centrifugal Ceiling Duct Blower Indoor / Outdoor



DMS

DMS and DMST are belt drive, forward curve inline duct blowers that are designed for indoor or outdoor use.

Drive	Model	Max CFM	Max Static Pressure	Model Sizes Available
Belt	DMS	8,500	2.5"	9-20
Belt	DMST	18,000	2.5"	9-20

DMS & DMST:

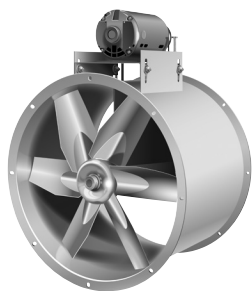


**AMCA International
Licensed**

In-Line & Mixed Flow Fans

General Ventilation

Tubeaxial Round Duct



HA & HAS



HDD

Belt drive HA and HAS and direct drive HDD are inline, tubeaxial propeller fans designed with flanges on both ends and can operate in any position. HAS is constructed with stainless steel housing and propeller.

Drive	Model	Max CFM	Max Static Pressure	Model Sizes Available
Belt	HA	63,845	2"	12-60
Belt	HAS	40,000	1.75"	24-48
Direct	HDD	14,792	0.75"	12-30

HA, HAS, & HDD:



AMCA International
Licensed

Centrifugal Round Duct



2100HC1, TIB, & TIBA

Horizontal 2100HC1 and 2100HC2 and vertical 2100VC1 and 2100VC2 and TIB Steel (and TIBA aluminum series) are belt drive, inline centrifugal exhausters designed for maximum efficiency, quietness, and low operating cost.

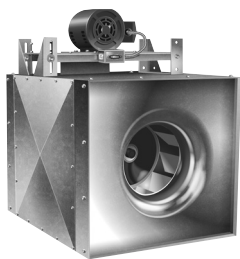
Drive	Model	Max CFM	Max Static Pressure	Model Sizes Available
Belt Horiz.	2100HC1	48,047	6"	2115-2149
Belt Horiz.	2100HC2	62,038	9"	2115-2149
Belt Vert.	2100VC1	48,047	6"	2115-2149
Belt Vert.	2100VC2	62,038	9"	2115-2149
Belt	TIB	20,250	5"	80-365
Belt	TIBA	20,250	5"	80-365

2100, TIB, & TIBA:



AMCA International
Licensed

Centrifugal Square Duct - Steel Housing



XB



XD

Belt drive XB and direct drive XD are square, inline centrifugal exhausters standard with AMCA "B" construction and designed to eliminate costly round to square ductwork transitions with the flexibility of any angle operation.

Drive	Model	Max CFM	Max Static Pressure	Model Sizes Available
Belt	XB	28,858	2.5"	90-425
Direct	XD	5,445	1.75"	100-200

XB & XD:



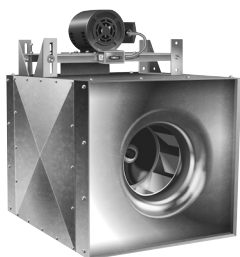
U.L. 705 Listed

AMCA International
Licensed

XD:



Centrifugal Square Duct - Aluminum Housing



XBA



XDA

Belt drive XBA and direct drive XDA are aluminum square, inline centrifugal exhausters standard with AMCA "B" construction and designed to eliminate costly round to square ductwork transitions with the flexibility of any angle operation.

Drive	Model	Max CFM	Max Static Pressure	Model Sizes Available
Belt	XBA	22,986	2.5"	90-365
Direct	XDA	5,445	1.75"	100-200

XBA & XDA:



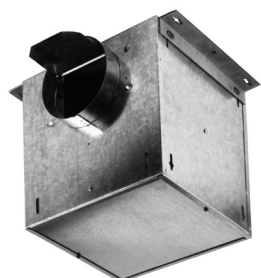
U.L. 705 Listed

AMCA International
Licensed

XDA:



Centrifugal In-Line Ceiling Exhauster Low Pressure



VQL

VQL is an in-line, direct drive centrifugal exhauster designed for ultra-quiet operation.

Drive	Model	Max CFM	Max Static Pressure	Model Sizes Available
Direct	VQL	3,605	1"	100-3500

VQL:



U.L. 507 Listed

AMCA International
Licensed

Mixed Flow Round Duct



QBMXH

Horizontal QBMXH and vertical QBMXV are belt drive, mixed-flow inline exhausters designed to exceed the efficiency of comparably sized tubular centrifugal and vaneaxial fans.

QBMXH & QBMXV:



U.L. 705 Listed

AMCA International
Licensed

Drive	Model	Max CFM	Max Static Pressure	Model Sizes Available
Belt Horiz.	QBMXH	60,349	5.5"	16-49
Belt Vert.	QBMXV	60,349	5.5"	16-49

Vaneaxial Round Duct



AVD

AVD is a compact, rugged, and precisely constructed direct drive fan with adjustable pitch blades.

AVD:

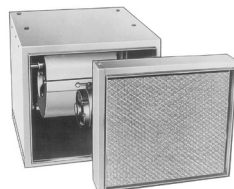


U.L. 705 Listed

AMCA International
Licensed

Drive	Model	Max CFM	Max Static Pressure	Model Sizes Available
Direct	AVD	102,989	8"	250-1600

Centrifugal Ceiling Duct Blower Indoor Only



DM

DM and DMT are belt drive, forward curve inline duct blowers that are designed for indoor use.

DM & DMT:

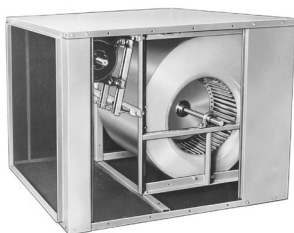


Intertek

AMCA International
Licensed

Drive	Model	Max CFM	Max Static Pressure	Model Sizes Available
Belt	DM	7,600	2.5"	7-18
Belt	DMT	8,800	2.5"	7-15

Centrifugal Ceiling Duct Blower Indoor / Outdoor



DMS

DMS and DMST are belt drive, forward curve inline duct blowers that are designed for indoor or outdoor use.

DMS & DMST:



Intertek

AMCA International
Licensed

Drive	Model	Max CFM	Max Static Pressure	Model Sizes Available
Belt	DMS	8,500	2.5"	9-20
Belt	DMST	18,000	2.5"	9-20

In-Line & Mixed Flow Fans

Restaurant Fans

Centrifugal Round Duct: Grease Rated UL 762



2100HIG

Horizontal 2100HIG and 2100VIG are belt drive, inline centrifugal exhausters designed for maximum efficiency, quietness, and low operating cost in applications with grease laden air.

Drive	Model	Max CFM	Max Static Pressure	Model Sizes Available
Belt Horiz.	2100HIG	45,182	6"	2115-2149
Belt Vert.	2100VIG	45,182	6"	2115-2149

2100HIG & 2100VIG:



AMCA International
Licensed

Mixed Flow Round Duct: Grease Rated UL 762



QBMXHIG

Horizontal QBMXHIG and vertical QBMXVIG are belt drive, mixed-flow inline exhausters designed to exceed the efficiency of comparably sized tubular centrifugal and vaneaxial fans in applications with grease laden air.

Drive	Model	Max CFM	Max Static Pressure	Model Sizes Available
Belt Horiz.	QBMXHIG	60,349	5.5"	16-49
Belt Vert.	QBMXVIG	60,349	5.5"	16-49

QBMXHIG & QBMXVIG:

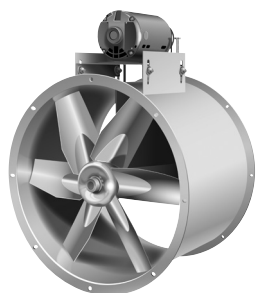


AMCA International
Licensed

In-Line & Mixed Flow Fans

Smoke Exhaust Fans

Propeller Round Duct: UL Smoke Exhaust Rated



HASE



HDDSE

HASE is a belt drive, tubeaxial exhauster designed for emergency smoke exhaust applications.

HASE: UL smoke exhaust rated at 500°F for 4 hours, 630°F for 4 hours, 800°F for 4 hours, and 1000°F for 20 minutes.

HDDSE: UL smoke exhaust rated at 500°F for 4 hours, 500°F for 3 hours, and 1000°F for 15 minutes.

Drive	Model	Max CFM	Max Static Pressure	Model Sizes Available
Belt	HASE	63,845	2"	16-60
Direct	HDDSE	14,792	0.75"	12-48

HASE & HDDSE:



U.L. 705 Listed

Power Ventilators for
Smoke Control
Systems

AMCA International
Licensed

Centrifugal Round Duct: UL Smoke Exhaust Rated



2100HSE

Horizontal 2100HSE and vertical 2100VSE Class 1 are belt drive, inline centrifugal exhausters designed for maximum efficiency, quietness, and low operating cost in emergency smoke exhaust applications.

UL smoke exhaust rated at 500°F for 4 hours and 1000°F for 15 minutes.

Drive	Model	Max CFM	Max Static Pressure	Model Sizes Available
Belt Horiz.	2100HSE	48,047	6"	2115-2149
Belt Vert.	2100VSE	48,047	6"	2115-2149

2100HSE & 2100VSE:



U.L. 705 Listed

Power Ventilators for
Smoke Control
Systems

AMCA International
Licensed

Mixed Flow Round Duct: UL Smoke Exhaust Rated



QBMXHSE

Horizontal QBMXHSE and vertical QBMXVSE are belt drive, mixed-flow inline exhausters designed to exceed the efficiency of comparably sized tubular centrifugal and vaneaxial fans for emergency smoke exhaust applications.

UL smoke exhaust rated at 500°F for 4 hours and 1000°F for 15 minutes.

Drive	Model	Max CFM	Max Static Pressure	Model Sizes Available
Belt	QBMXHSE	60,349	5.5"	16-49
Belt	QBMXVSE	60,349	5.5"	16-49

QBMXHSE & QBMXVSE:



U.L. 705 Listed

Power Ventilators for
Smoke Control
Systems

AMCA International
Licensed

Vaneaxial Round Duct: UL Smoke Exhaust Rated



AVDSE

AVDSE is a compact, rugged, and precisely constructed direct drive fan with adjustable pitch blades designed for emergency smoke exhaust applications.

UL smoke exhaust rated at 500°F for 4 hours and 500°F for 3 hours.

Drive	Model	Max CFM	Max Static Pressure	Model Sizes Available
Direct	AVDSE	102,989	8"	250-1600

AVDSE:



U.L. 705 Listed

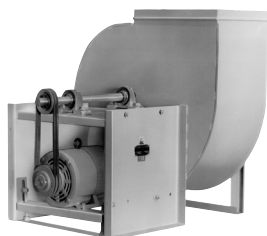
Power Ventilators for
Smoke Control
Systems

AMCA International
Licensed

Blowers & Plenum Fans

General Ventilation

Centrifugal Utility Blower Backwardly Inclined Airfoil



8100

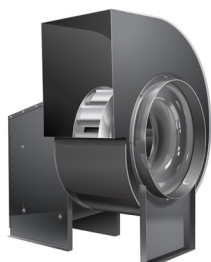
Belt drive 8100 and QBR and direct drive QBRD are utility sets designed for high efficiency and low sound output.

8100 available in:

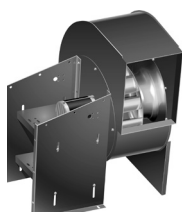
- Class 1 or Class 2
- Clockwise or Counterclockwise Rotation
- 7 discharge positions

QBR and QBRD available in:

- Clockwise or Counterclockwise Rotation
- 7 discharge positions



QBR



QBRD

Drive	Model	Max CFM	Max Static Pressure	Model Sizes Available
Belt	8100C1	78,977	6.5"	8115-8154
Belt	8100C2	80,015	11"	8115-8154
Belt	QBR	23,230	3.5"	100-365
Direct	QBRD	3,065	3.25"	50-161

8100 & QBR:

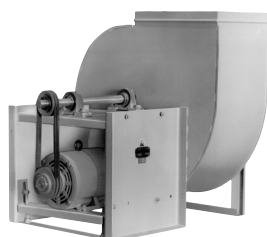


AMCA International
Licensed

QBRD:



Centrifugal Utility Blower Backwardly Inclined Single Thickness



3000

Belt drive 3000 is a utility set designed for high efficiency and low sound output.

3000 available in:

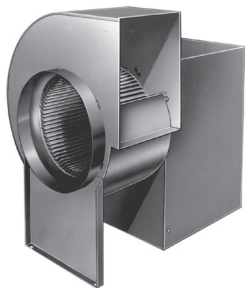
- Class 1 or Class 2
- Clockwise or Counterclockwise Rotation
- 7 discharge positions

3000:

AMCA International
Licensed

Drive	Model	Max CFM	Max Static Pressure	Model Sizes Available
Belt	3000C1	61,128	5.5"	3012-3054
Belt	3000C2	81,504	11"	3012-3054

Centrifugal Blower Forward Curved Wheel



FCF

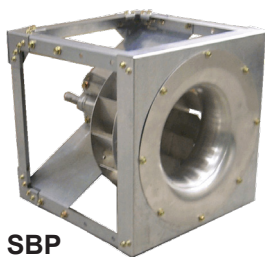
FCF is a belt drive, forward curved utility blower.

FCF:



Drive	Model	Max CFM	Max Static Pressure	Model Sizes Available
Belt	FCF	14,990	4"	10-25

Plenum Low Cost Arrangement 1



SBP

SBP is a belt drive, economical arrangement 1, plenum fan with centrifugal wheel.

Drive	Model	Max CFM	Max Static Pressure	Model Sizes Available
Belt	SBP	5,700	1.5"	135-300

Plenum Steel Wheel Arrangement 3



8800

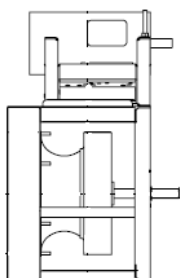
8800HC1 is designed to be a heavy duty belt drive, arrangement 3 plenum fan with welded steel centrifugal wheel.

8800:

**AMCA International
Licensed**

Drive	Model	Max CFM	Max Static Pressure	Model Sizes Available
Belt	8800HC1	30,944	8"	8815-8840

Plenum Aluminum Star Wheel - Motor Mounted on Frame



8800STRF

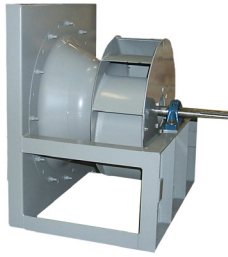
8800STRF is designed to be a heavy duty belt drive, arrangement 3 plenum fan with the motor mounted on the frame and with lower sound, aluminum centrifugal wheel.

8800STRF:

**AMCA International
Licensed**

Drive	Model	Max CFM	Max Static Pressure	Model Sizes Available
Belt	8800STRF	79,552	7"	8815-8854

Plenum Alum Star Wheel - Low Sound



8800STRH

8800STRH is designed to be a heavy duty belt drive, arrangement 3 plenum fan with the motor mounted on the frame and aluminum centrifugal wheel designed for quiet operation.

Drive	Model	Max CFM	Max Static Pressure	Model Sizes Available
Belt	8800STRH	79,552	7"	8815-8860

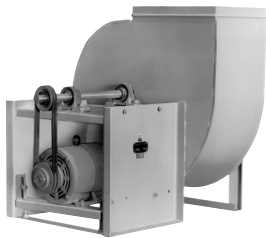
8800STRH:

**AMCA International
Licensed**

Blowers & Plenum Fans

Restaurant Fans

Centrifugal Utility Blower: Grease Rated UL 762



8100 and QBR are belt drive, utility sets designed for high efficiency and low sound output in restaurant applications.

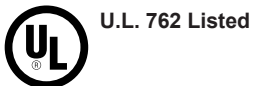
8100 available in:

- Class 1 or Class 2
- Clockwise or Counterclockwise Rotation
- 7 discharge positions

QBR available in:

- Clockwise or Counterclockwise Rotation
- 7 discharge positions

8100 & QBR:



8100



QBR

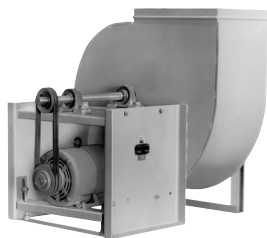
Drive	Model	Max CFM	Max Static Pressure	Model Sizes Available
Belt	8100C1	78,977	6.5"	8115-8154
Belt	8100C2	80,015	11"	8115-8154
Belt	QBR	23,230	3.5"	100-365

AMCA International
Licensed

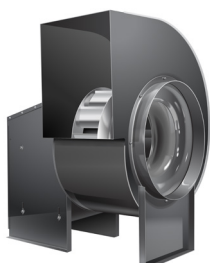
Blowers & Plenum Fans

Smoke Exhaust Fans

Centrifugal Utility Blower: Smoke Exhaust



8100SE



QBRSE

Belt drive 8100SE and QBRSE are utility sets designed for high efficiency and low sound output in emergency smoke exhaust applications.

UL smoke exhaust rated at 500°F for 4 hours and 1000°F for 15 minutes.

8100SE available in:

- Class 1 or Class 2
- Clockwise or Counterclockwise Rotation
- 7 discharge positions

QBRSE available in:

- Clockwise or Counterclockwise Rotation
- 7 discharge positions

Drive	Model	Max CFM	Max Static Pressure	Model Sizes Available
Belt	8100SEC1	78,977	6.5"	8115-8154
Belt	8100SEC2	80,015	11"	8115-8154
Belt	QBRSE	23,230	3.5"	100-365

8100SE & QBRSE:



U.L. 705 Listed

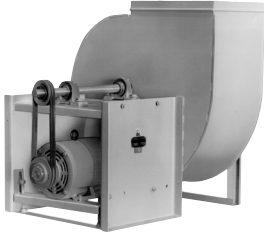
**Power Ventilators
for Smoke Control
Systems**

**AMCA International
Licensed**

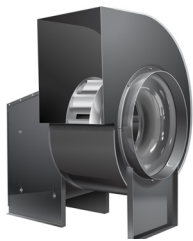
Blowers & Plenum Fans

Hurricane Rated Fans

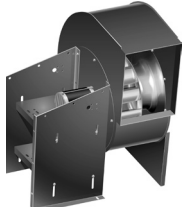
Centrifugal Utility Blower: Hurricane Rated



3000H & 8100H



QBRH



QBRDH

Belt drive 3000H, 8100H, QBRH and direct drive QBRDH are utility sets designed for high efficiency and low sound output in high wind and hurricane resistance applications.

3000H and 8100H available in:

- Class 1 or Class 2
- Clockwise or Counterclockwise Rotation
- 7 discharge positions

QBRH and QBRDH available in:

- Clockwise or Counterclockwise Rotation
- 7 discharge positions

Drive	Model	Max CFM	Max Static Pressure	Model Sizes Available
Belt	3000C1H	27,468	5.5"	3012-3037
Belt	3000C2H	36,624	11"	3012-3037
Belt	8100C1H	27,468	6.5"	8115-8137
Belt	8100C2H	35,098	11"	8115-8137
Belt	QBRH	23,230	3.5"	100-365
Direct	QBRDH	3,065	3.25"	50-161

QBRH & 8100H:



**3000H, 8100H,
QBRH, & QBRDH:**



**3000H, 8100H, &
QBRH:**

**AMCA International
Licensed**

QBRDH:



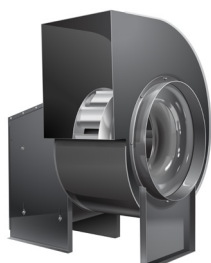
Blowers & Plenum Fans

Hurricane and Restaurant Grease Rated Fans

Centrifugal Utility Blower: Grease Rated UL 762, Hurricane Rated



8100H



QBRH

8100H and QBRH are belt drive, utility sets designed for high efficiency and low sound output in restaurant grease and high wind and hurricane resistance applications.

8100H available in:

- Class 1 or Class 2
- Clockwise or Counterclockwise Rotation
- 7 discharge positions

QBRH available in:

- Clockwise or Counterclockwise Rotation
- 7 discharge positions

Drive	Model	Max CFM	Max Static Pressure	Model Sizes Available
Belt	8100C1H	27,468	6.5"	8115-8137
Belt	8100C2H	35,098	11"	8115-8137
Belt	QBRH	23,230	3.5"	100-365

8100H & QBRH:



U.L. 705 Listed



U.L. 762 Listed

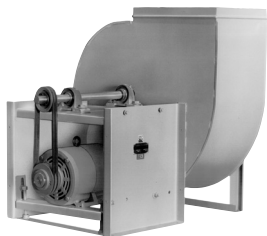


AMCA International
Licensed

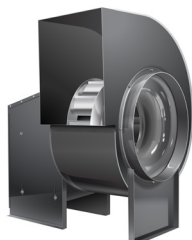
Blowers & Plenum Fans

Hurricane and Smoke Exhaust Rated Fans

Centrifugal Utility Blower: UL Smoke Exhaust Rated, Hurricane Rated



8100SH



QBRSEH

8100SH and QBRSEH are belt drive, utility sets designed for high efficiency and low sound output in both emergency smoke exhaust and high wind and hurricane resistance applications.

UL smoke exhaust rated at 500°F for 4 hours and 1000°F for 15 minutes.

8100SH available in:

- Class 1 or Class 2
- Clockwise or Counterclockwise Rotation
- 7 discharge positions

QBRSEH available in:

- Clockwise or Counterclockwise Rotation
- 7 discharge positions

Drive	Model	Max CFM	Max Static Pressure	Model Sizes Available
Belt	8100C1SH	27,468	6.5"	8115-8137
Belt	8100C2SH	35,098	11"	8115-8137
Belt	QBRSEH	23,230	3.5"	100-365

8100SH & QBRSEH:



U.L. 705 Listed



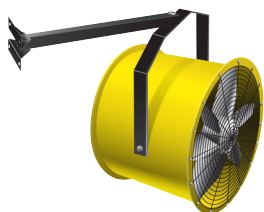
**Power Ventilators
for Smoke Control
Systems**

**AMCA International
Licensed**

Circulators

General Ventilation

Propeller Hanging Stir Fan / ManCooler



HDDDF is a direct drive propeller fan with OSHA guards that can be dock mounted for circulator fan use.

HDDDF:



U.L. 705 Listed

AMCA International
Licensed

Drive	Model	Max CFM	Max Static Pressure	Model Sizes Available
Direct	HDDDF	3,938	0"	18

HDDDF

Circulator Fan - Indoor Only

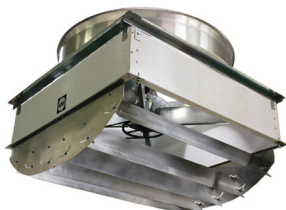


HAF is a direct drive, mounted propeller fan with OSHA guards and low energy consumption.

Drive	Model	Max CFM	Model Sizes Available
Direct	HAF	12,280	12-36

HAF

Propeller Composite Housing



DXPGDB is a ceiling or wall mounted, belt drive prop fan with adjustable discharge vanes and polymer composite housing.

Drive	Model	Model Sizes Available
Belt	DXPGDB	60

DXPGDB

De-stratification Fans

General Ventilation

De-stratification Fan Jet System



RR

Belt drive RR is a special tube pressurizing fan with curved discharged vanes that recover the rotational energy of the discharging air and can be used in a plenum arrangement.

Drive	Model	Max CFM	Max Static Pressure	Model Sizes Available
Belt	RR	10,600	1"	18-30

Hanging Fan Air De-Stratification Fan



TUB

TUB is a direct drive, 4-blade impeller designed to move large quantities of air at low velocities, in a flat cone-shaped pattern that follows the slope of the roof downward and with uniform distribution.

Drive	Model	Max CFM	Model Sizes Available
Direct	TUB	13,500	14-24

Smoke Exhaust Fans



U.L. 705 Listed

500°F for 4 hours
1000°F for 15 minutes

Acme's smoke exhaust fans are designed for life-saving smoke exhaust management under severe temperatures.

These units are intended for installation in buildings in accordance with requirements contained in the Recommended Practice for Smoke Control System, NFPA 92A; and are intended to be connected to and controlled by Listed Smoke Control System Equipment (UUKL).



Acme Engineering & Manufacturing Corporation
P.O. Box 978
Muskogee, OK 74402
918/682-7791
Fax 918/682-0134
www.acmefan.com

Stainless Steel Tubeaxial Fans

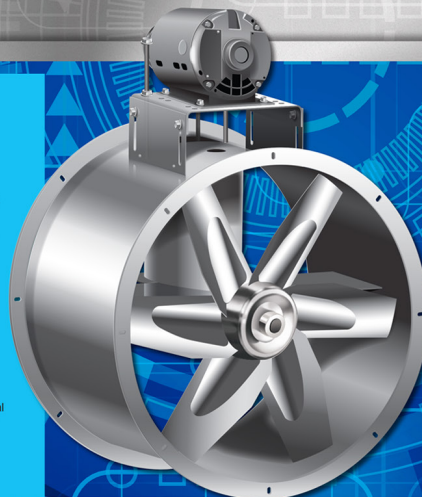
Belt-Drive Stainless Steel Tubeaxial Fans

The HAS fan is a belt drive, tubeaxial exhauster with the motor, drives and bearings located outside the airstream. Stainless Steel Tubeaxial fans are industrial strength and built for harsh applications, which may include water treatment facilities, food processing, chemical processing, and other applicable commercial or industrial applications with moisture-laden or corrosive environments.

- Corrosion resistant, 304 stainless steel
- Maximum inlet air temp.: 200°F
- Maximum ambient air temp.: 104°F
- Installation must comply with all local and national safety codes including the National Electrical Code (NEC)

Options and Accessories

- Stainless steel belt guard or motor/weather cover
- Stainless steel companion flanges
- Stainless steel guards
- Isolators
- Disconnect switches



DESIGN FEATURES	BENEFITS
Exhaust or Supply	Flexible to application
May be ducted, non-ducted, or rooftop mounted	Diversity of installation
May be installed vertically or horizontally	Versatile operation
Stainless steel, precision balanced propeller	Corrosion resistant
Pillow block bearings are rated at an L ₁₀ life of 200,000 hours	Long lasting
Heavy gauge, stainless steel housing, belt and bearing covers, shaft fasteners and motor mount	Corrosion resistant, rugged design

Acme Hurricane and High Wind Products



LOOK WHAT JUST BLEW IN!



ACME ENGINEERING & MANUFACTURING CORP.

P.O. Box 978 • Muskogee, OK 74402 • 918/682-7791
Fax 918/682-0134 • www.acmefan.com

SEE
FANTASTIC!
FOR AVAILABLE MODELS



TURN UP YOUR EFFICIENCIES WITH ACME'S EC MOTORS



ELECTRONICALLY COMMUTATED MOTORS

Meet your energy savings requirements with the new, electronically commutated motors that maintain 85% efficiency even as the motor is slowed down.

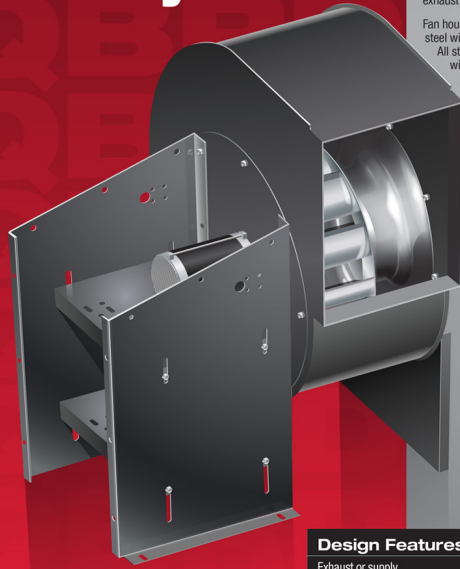
Electronically Commutated Motors can be turned down by 80%. An EC Motor contains permanent magnets on the rotor thus the magnetic field does not have to be generated as in an induction motor. This results in increased efficiency especially at lower speeds. These motors are available in a direct drive configuration on Acme's upblast, downblast, panel, square inline, vaneaxial, and centrifugal fans.



Acme Engineering & Manufacturing Corporation
P.O. Box 978 • Muskogee, OK 74402 • (918) 682-7791
Fax (918) 682-0134 • www.acmefan.com

Est. 1938

Direct Drive Centrifugal Utility Set



Model QBRD is a direct drive centrifugal utility set designed for high efficiency and low sound output.

The QBRD utility set is a medium duty fan available in four sizes with capacities up to 5,100 CFM and up to 3.25" static pressure. Maximum operating temperature of the QBRD is 250°F. The QBRD's compact design allows quick and easy installation in equipment rooms or on rooftops for exhaust or supply applications.

Fan housing is made of heavy duty steel with lock formed construction. All steel components are coated with ACME-SEAL Polyester Powder Coat.

Model QBRD has a 2 year limited warranty (including motor).

Options and Accessories

- Aluminum construction
- Dampers
- Weather cover
- Housing drain 1.5" or 2"
- Vibration isolators
- Inlet guard/outlet guard
- Outlet flange
- Spark resistant construction (AMCA B)
- Grease trough
- NEMA 1 or NEMA 3R disconnect switch
- EC motors (electronically commutated motors) available
- Speed controls: single or 2 speed - EC motors only

Design Features

Exhaust or supply
Field rotatable to any of seven discharge positions
EC motor available
Designed for low sound output

Benefits

Flexible to application
Broad range of installation
Superior efficiency
Quiet operation

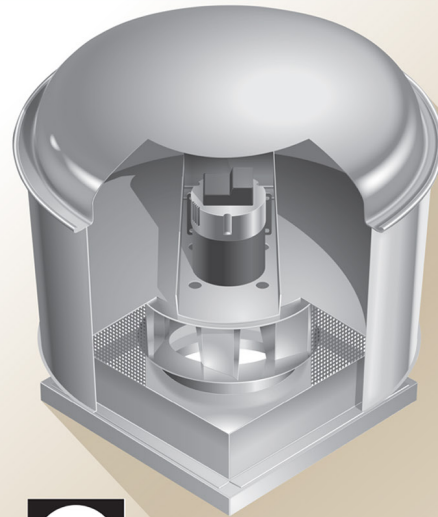


ACME ENGINEERING & MANUFACTURING CORPORATION
P.O. Box 978
Muskogee, OK 74402
918/682-7791
Fax 918/682-0134
www.acmefan.com

MODEL PVD

Introducing...

Acme's new direct drive centrifugal downblast fan Model PVD. This exhaust fan transforms Acme's best selling belt drive model PV into a direct drive fan that can offer improved performance ranges to meet your customers' demands. Model PVD also extends the range of the direct drive PRN downblast rooftop exhaust fans.



- Current sizes PV120D up to PV200D
- Max CFM increased from 2,770 to 6,062 at 0" SP when compared to Model PRN
- EC motors (electronically commutated motors) can meet your energy saving requirement and maintain 85% efficiency at all speed ranges
- Single phase and three phase EC motor technology available (EC motors also available on the PRN)
- 1/2 HP to 2 HP available in 115/208/230 single phase and 2 HP 208/230/460 three phase
- Expanding to VFD controllable motors
- 2 year limited warranty (including motor)
- New sizes being added to FANtastic!® soon



ACME ENGINEERING & MANUFACTURING CORPORATION

P.O. Box 978 • Muskogee, OK 74402 • 918/682-7791
Fax 918/682-0134 • www.acmefan.com

ACME SYNC DRIVE

Hybrid VFD for belt or direct driven fans

Plug and Play...

No Programming Necessary!!!

Mounted or Not Mounted

Standard Features:

- Potentiometer dial for speed control
- 0-10V input or 4-20mA
- Compatible with ACME-SYNC controllers
- 24V damper output control with built in time delay
- Two color LED with either a fast or slow single blink code for faults
 - Fault notifications include fault under/over voltage, input phase loss, over current, over heat, short circuit protection, hardware error and cooling fan error on models with cooling fan
- Thermal Overload (TOL) protection
- Does not require filtering technology to meet IEEE 519
- Acme Sync Drives are designed and assembled in the USA

Housing

- Rugged die-cast aluminum with painted exterior for additional protection
- NEMA 4X Enclosure / IP65

Horsepower

HP	Input Volts 1 Phase		Input Volts 3 Phase		Output Volts 3 Phase	
	115	230	230	460	230	460
1/3	X	X			X	
1/2	X	X			X	
3/4	X	X			X	
1		X	X	X	X	X
1 1/2		X	X	X	X	X
2		X	X	X	X	X
3			X	X	X	X
5				X		X
7 1/2				X		X
10				X		X



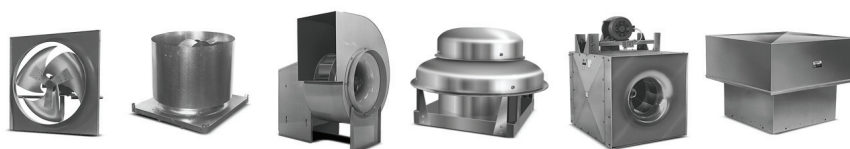
Acme Engineering & Manufacturing Corporation
P.O. Box 978 • Muskogee, OK 74402 • (918) 682-7791
Fax (918) 682-0134 • www.acmefan.com

Est. 1938



Proud. Tough. **AMERICAN.**

Acme is proud to be an American manufacturer. Since 1938, Acme has designed and manufactured high-performance fans and ventilation equipment. Today, Acme stands strong, with its legacy built on the innovative engineering and precision manufacturing of the highly skilled American workforce. Acme is proud to be **MADE IN THE USA.**



Acme Engineering & Manufacturing Corporation · Muskogee, Oklahoma
www.AcmeFan.com · 918-682-7791